



Cooper Bearings Group

Cooper Roller Bearings Co Ltd
Wisbech Road
King's Lynn
Norfolk PE30 5JX
England
Telephone +44 (0) 1553 763 447
Fax +44 (0) 1553 761 113
Email: coopersalesuk@kaydon.com

Cooper Bearings Group
Room 617, Zhongtie Zixun Plaza
Southern Square
West Railway Station
Fengtai District
Beijing 100055
People's Republic of China
Telephone +(86) 10 58095018
Fax +(86) 10 58095002

Cooper Geteilte Rollenlager GmbH
Postfach 100 423
Oberbenrader Str 407
47704 Krefeld
Germany
Telephone+(49) 2151 713 016
Fax +(49) 2151 713 010

The Cooper Split Roller Bearing Corp.
5365 Robin Hood Road, Suite B
Norfolk, VA 23513
USA
Telephone 757 460 0925
Fax 757 464 3067

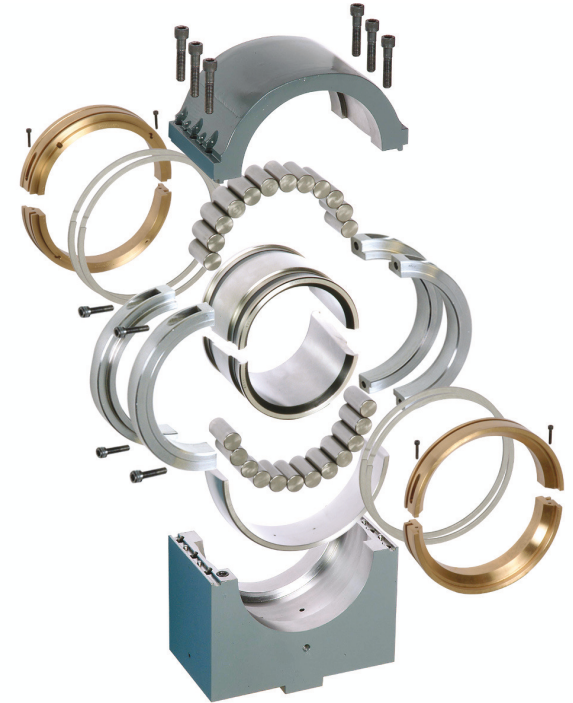
Cooper-Grainger Canada Inc.
5650 Tomken Road
Unit 1, Mississauga
Ontario L4W 4P1
Canada
Telephone 905 890 2266
Fax 905 890 2269

www.cooperbearings.com

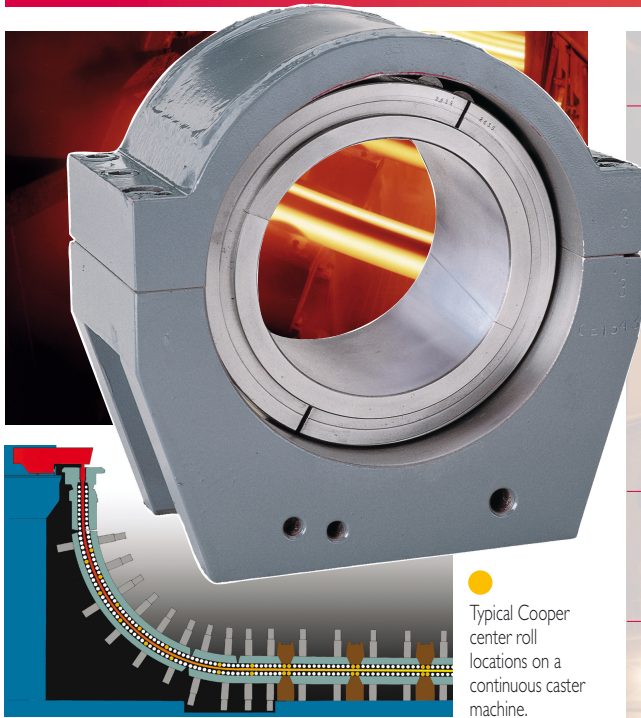
Authorized Cooper Distributors Worldwide

April 2008

Continuous Slab Caster Bearings



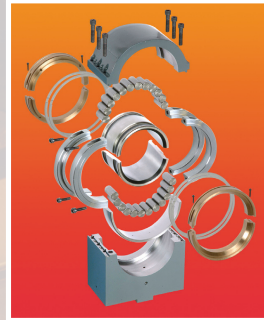
Continuous Slab Caster Bearings



Typical Cooper center roll locations on a continuous caster machine.

Features & Benefits

Split to the Shaft Continuous Caster Bearing



Low profile steel watercooled housing. Accommodates shaft expansion without inducing wear or heavy loading. Low profile facilitates fitting smaller diameter rolls. Full complement of rollers allows for high load capacity in minimum envelope. Grease lubrication directly onto the roller path. Low cost of installation. Ease of replacement. Reduces downtime. Increases maintenance efficiency.

Superior Sealing

Choice of Laminar or Polymer seals. Reduces contamination. Retains lubrication. Prolongs bearing life.

Full Service Manufacturer

Proven range of products. Vast engineering knowledge. Problem solving a speciality. Technical and installation support service.

Established organisation

Global distribution network. Local support provided by Cooper and distribution partners.

Further steel industry applications for Cooper split to the shaft roller bearings include:

Raw materials

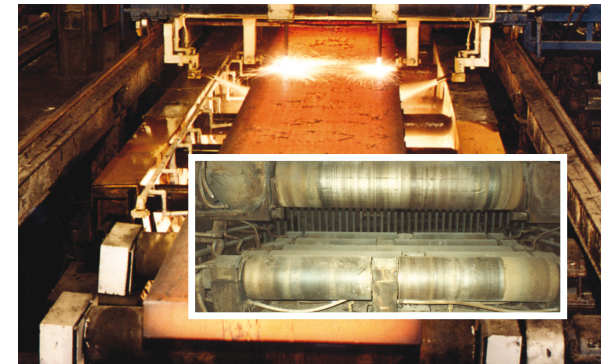
Conveyors
Stacker reclaimers
Separators
Bucket elevators
Rotary & vertical kilns
Fans
Tippers
Crushers
Dock handling

Steel forming

Cooling banks
Transfer tables
Quench tanks
Reheat furnaces
Breast rolls
Rolling mill drives
Skidbanks
Crop shears
Coilers

Steel making

Converters
Trunnions
Gearboxes
Further applications include
Heat treatment
Plating lines
Water treatment



The Cooper Bearing Group is a full service provider of sales and technical engineering support to our customers around the world. No other split roller bearing manufacturer matches the Cooper breadth of knowledge and experience.

Significant investment has transformed Cooper into a responsive, customer focused organisation offering stock availability for standard product and competitive lead time for special bearings. We support our customers with rapid technical and commercial information directly from our offices and via our website: cooperbearings.com

To ensure Cooper continues to lead our industry, we have created a new product and business development process. This ensures we will continue to offer products and services that provide demonstrable competitive advantage.

Proven in steelworks worldwide

Cooper have split to the shaft, watercooled continuous caster bearings in steelmaking installations around the world. Our watercooled bearings are manufactured to meet specific design requirements and we work closely with OEM's to ensure the application requirements are met and exceeded.

High return on investment

In the arduous conditions of the continuous caster environment, the Cooper bearing offers a long operational life. Cooper bearings when positioned on the upper segments have returned in excess of 2m tons cast. When fitted to the lower segments, which have higher loading conditions, these positions have averaged 1m tons.

Lubrication and cooling

Suitable for close clearance applications, the Cooper bearing features a low profile housing for optimum cooling. The watercooled housings will maintain the bearing at temperatures of 140° - 176°F (60° - 80°C) at correct flow rates. Cooper recommend automatic grease fed lubrication for maximum lifespan.

Integral axial movement

When temperature variations cause the roll length to change, the profiled cylindrical rollers of the Cooper bearing move freely across the bore of the outer race and the diameter of the inner race allowing almost frictionless movement within the bearing.

Superior sealing

Cooper have had a high degree of success with Laminar and Polymer seals mounted as single or double sets. These seals are resistant to damage by scale particles and in conjunction with effective lubrication prevent water entry into the housings.

Worldwide local support

Our local sales manager will offer free professional advice backed by solid technical support and product availability from our distribution partners in over thirty countries around the world.

Contact Cooper for more information.

